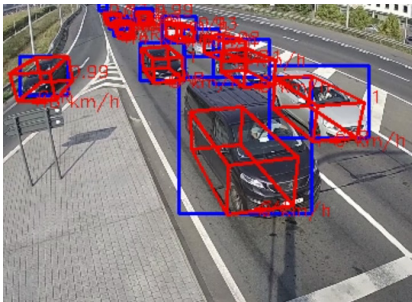


# TRAFICAM AI™

AI-Powered HD Traffic Sensor

Designed to reliably detect and classify road users, the TraftCam AI is an intelligent HD visible sensor for traffic monitoring in complex urban environments. Featuring a low-light HD visible camera and AI algorithms built on 25+ years of traffic detection, TraftCam AI offers detailed vision and data collection for safer, more efficient cities. Capable of tracking multiple objects, the advanced edge-based AI effectively controls intersections and gathers detailed traffic data for better city planning decisions.

**DETECTION BASED ON AI**  
**EFFECTIVE SIGNAL CONTROL**  
**HIGH RESOLUTION DATA**  
**TRAFFIC PREDICTION**  
**WI-FI BASED TRAVEL TIME MONITORING**  
**EASY-TO-INSTALL**



## PRECISE DETECTION AND CONTROL

Edge-based AI and Full HD imaging offer advanced intersection control that outperforms other signal control technologies

- Low light visual HD camera provides reliable vehicle detection at night and in challenging weather conditions
- Detect the position, speed and heading of vehicles in any direction
- Directly integrate with traffic controllers through accurate virtual loop configuration and dry contacts

## FUTUREPROOF TRAFFIC INSIGHT

TraftCam AI captures advanced and high-resolution traffic data for better-informed city planning decisions

- Automatically detect and classify road users and vehicle types into a wide range of subcategories
- Gather valuable data, including vehicle trajectories throughout intersections
- Provides real-time integration over APIs for adaptive and predictive traffic systems
- Provides information about the Situational Awareness

## COMPREHENSIVE REPORTING

Generate automated reports with Acyclica to identify bottlenecks

- Determine the turning movement count per vehicle class at intersections throughout the day
- Measure travel & delay time between intersections \*1
- Streamlined data visualization creates easy-to-read, compelling reasoning for city planning adjustments

TRAFICAM AI

System Overview				
Functionalities	Object detection: (motor)bike, small vehicles (car, van), big vehicles Vehicle Presence Detection Traffic Data Collection Queue Length Monitoring Premium Traffic Data Collection - optional license			
Services	FLIR VSO data - optional Acyclica license Modules (Reporting Module, Planning Module, Signal Timing Tools) - optional Acyclica licenses Wi-Fi Travel Time analytics - optional Acyclica license *1			
Detection Zones	24 virtual loops for presence detection 8 traffic data zones for classification and counting			
Configuration	Local/remote web page setup via PoE, Wi-Fi*1 or BPL			
Imaging & Optical				
Type	CMOS Type 1/2.8 color High Dynamic Range			
Resolution	Full HD (1920 x 1080)			
Frame Rate	25 fps			
Compression	H.264, MJPEG			
Streaming Video	RTSP			
Product Types				
	Part Number (Wi-Fi)	Part Number (Non Wi-Fi)	Focal Distance	Detection Distance for Vehicle Presence
TrafiCam AI - Wide	10-7710	10-7711	2.8 mm	0 - 75 m / 0 - 250ft
TrafiCam AI - Narrow	10-7715	10-7716	8.0 mm	75 - 150 m / 250 - 500ft
Mechanical				
Material	Aluminum housing with integrated polycarbonate sunshield			
Dimensions (incl. mounting bracket)	Vertically mounted: 45 cm x 16 cm x 12 cm / 9.8 in x 6.3 in x 4.7 in Horizontally mounted: 41 cm x 18 cm x 12 cm / 16.2 in x 7.1 in x 4.7 in			
Electrical				
Input power	24-42 VAC / 24-48 VDC			
Power consumption	Avg 9,5 W / Peak 14 W			
Communication				
Output contacts	<u>ROW</u> - 1 N/O and 1 N/C dry contact direct - 16 N/C dry contacts via TI BPL3 interface		<u>USA</u> - Hard wired: 4 N/C onboard + maximum 5x N/C via 4I/O USB expension boards (so maximum 24 outputs in total) - SDLC: BIU - 64 or SUI - 128	
PoE	PoE mode A for configuration, video streaming and data communication			
BPL	80 Mbps Broadband over Powerline communication via TI BPL3 (EDGE) interface			
Wi-Fi	IEEE 802.11 type b.g.n. EIRP < 100mW *1			
Environmental				
Shock & Vibration	NEMA TS2 specs			
Materials	All weatherproof UV resistant			
IP Rating	IP 67			
Temperature Range	-34°C to + 74°C			
Regulatory				
FCC / EU Directives	FCC part 15 class A, EMC 2014/30/EU RoHS 2011/65/EU, LVD 2014/35/EU			

For the latest specification, please visit [www.teledyneflir.com](http://www.teledyneflir.com)

\*1 only Wi-Fi version

AMERICAS

27700 SW Parkway Ave.  
Wilsonville, OR 97070  
PH: +1 877.773.3547

EUROPE

Hospitaalweg 1B  
B-8510 Marke  
Belgium  
PH: +32 (0)56 37 22 00



For more information, please visit:  
[www.flir.com/traficam-ai](http://www.flir.com/traficam-ai)

[www.teledyneflir.com](http://www.teledyneflir.com)

Equipment described herein may require US Government authorization for export purposes. Diversion contrary to US law is prohibited. Imagery for illustration purposes only. Specifications are subject to change without notice. ©2022 Teledyne FLIR LLC, Inc. All rights reserved. 02-17-22 22-0142-ITS-TrafiCam-A4