

GRIFFIN™ G510

Person-Portable GC-MS Chemical Identifier



The Griffin™ G510 Gas Chromatograph Mass Spectrometer (GC/MS) is a versatile, person-portable chemical identifier. It complements presumptive techniques used during emergency missions, by enabling responders to analyze all phases of matter (liquid, solid, vapor) and by performing rapid field-confirmation of chemical hazards. The integrated heated sample probe enables hot zone operators to identify vapor-phase chemical threats within seconds when operated in Survey Mode. The integrated split/splitless injector allows for environmental, forensic, and hazardous material sampling via syringe injection of organic liquids. The 9" on-board touchscreen displays guided user prompts and can be operated while wearing full personal protective equipment (PPE) downrange. It is built with an IP65-rated enclosure for harsh environments and supports passive defense, interdiction, elimination, and consequence management missions. Long-lasting, on-board batteries ensure every mission is supported from beginning to end.

MASS SPEC PERFORMANCE REDEFINED

Confidently identify unknowns and take action with guided prompts and simple threat alarms

- Laboratory level, gold-standard linear quadrupole mass analyzer
- Full NIST and SWGDRUG on-board libraries provide confirmatory identification and analysis of trace compounds, unknown chemicals, and mixtures
- Simple on-board touchscreen with navigation assistant and Method Selector tool
- Visual and audible alarm confirmation with limited data interpretation
- On-board WiFi and GPS assist in maintaining result defensibility
- Remote monitoring and control with WiFi hotspot

ULTIMATE CHEMICAL DETECTION TOOLBOX

Versatile in-field sampling options for vapor, liquid, and solid samples

- Vapor sampling probe with rapid-response survey mode
- Integrated split/splitless liquid injector accepts direct injection of organic liquids
- Available Prepress Sample Introduction (PSI) Probe, Sample Prep Kit (SPK), and Touch-And-Go (TAG™) capability for direct analysis of solid samples
- Effortlessly links with SPME and headspace sample collection tools
- High-fidelity, low thermal mass (LTM) GC column for unsurpassed resolution in challenging environments

BUILT FOR EVERYONE, BUILT FOR EVERYWHERE

Completely self-contained and mission-ready from the field to the lab

- IP65-rated, dust-tight and spray-resistant
- Built-in active pumping system eliminates need for an external service module
- Integrated carrier gas, batteries, and training reference videos
- Simple field maintenance activities for increased uptime
- Extensive training, service, and reachback options available
- Optional vehicle mount kit for shock and vibration protection during off-road or harsh transport



SPECIFICATIONS
Griffin G510

Technology	Gas Chromatography/Mass Spectrometry (GC/MS)
Dimensions (L x W x H)	13.25 x 13.25 x 15.75 in (33.7 x 33.7 x 40 cm) - includes batteries, carrier gas, and vacuum system
Weight	36 lbs (16.3 kg) - includes batteries, carrier gas, and vacuum system
Optional Vehicle Mount Kit (L x W x H)	- Road-Ready Version: 16.7 x 14 x 15.2 in (with G510 installed) - Off-Road Version: 16.7 x 17.5 x 16.2 in (with G510 installed)
Operating Temp / Humidity	32 to 104 °F (0 to 40 °C); <95% relative humidity
Storage Temp	-13 to 131 °F (-25 to 55 °C)
Decontamination	Sealed for Survey Mode operation in hot-zone; IP65-rated enclosure is dust-tight and spray-resistant
Power Supply	100-240V 50-60Hz (220 W max); 19V (DC); 2 x #2590 @ 15V Li Ion batteries (included)
Battery Life	4 hrs in Survey Mode, 2 hrs in Confirmation Mode; hot swappable
Start Up Time	15 minutes to full operation from cold
Calibrant	On-board FC-43 (Perfluorotributylamine)
Carrier Gas	On-board helium; external helium connector, automatic switching (Hydrogen capable)

System Interface

Display	9" Multitouch Color Display (1280x720 WVGA; 1300 nits brightness)
Alerts	Audible and visual (touchscreen and handheld probe)
Software	GSS Level 1 Touch; multiple user levels
Communication	2 x USB 2.0, Bluetooth 4.0, WiFi 802.11n, Ethernet via USB, integrated GPS
Data Storage	Internal ≥128GB SSD
Training Requirements	2 hours basic operation; 8 hours Operator Certification

Sampling & Identification

Sample Phase	Solid, liquid, and vapor
Sample Introduction	Heated Sample Probe (included standard): - Vapor survey mode via Membrane Introduction Mass Spectrometry (MIMS) Inlet - Vapor confirmation via Internal Dual-Bed Preconcentrator Split/splitless injector (included standard) accepts: - Direct liquid sampling (organic solution) via syringe - Liquid extraction via SPME fiber or PSI-Probe w/ Gerstel Twister™ * - Solid PSI-Probe™ thermal separation via TAG™ * Sample Prep Kit (SPK) - Simplified analysis of solids and liquids
Threats	Detects and identifies trace-level explosives, narcotics like Fentanyl and its analogues, A-series and Novichok CWAs, TICs, environmental pollutants, and other chemicals
Standard Reference Database	NIST/EPA/NIH Mass Spectral Library, SWGDRUG Mass Spectral Library, and GriffinLib Mass Spectral Library included, with instant updates available

*optional accessories

AMERICAS

7055 Troy Hill Dr. Suite 300
Elkridge, MD 21075 USA

APAC

10 Kallang Avenue #09-10
Aperia Tower 2
Singapore 335910

EMEA

Luxemburgstraat 2
2321 Meer
Belgium

Sampling & Analysis

Full identification in 4-15 minutes for most chemicals; identification within seconds (near real-time) when operating in Survey Mode

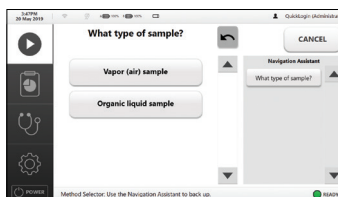
Mass Spectrometer

Mass Analyzer Type	Linear quadrupole mass filter
Mass Range / Resolution	15-515 m/z; 0.7 amu @ FWHM
Ionization Type / Source	Electron Impact Ionization; non-radioactive ionization source
Detector	Electron Multiplier
Vacuum System	Self-contained miniature turbomolecular & diaphragm pumps
Dynamic Range	7 decades
Detection Limit	PPM (parts per million) - PPB (parts per billion). Note: PPT (parts per trillion) for vapor analysis with extended sampling time.

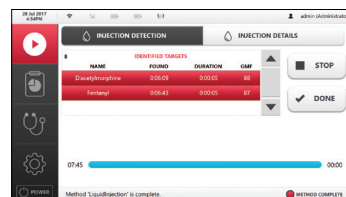
Gas Chromatograph

LTM-GC Column	DB-5MS (15 m x .18 mm x .18 um); others available
Temperature Range	Programmable 40 to 300 °C; ramping of 100 °C/min

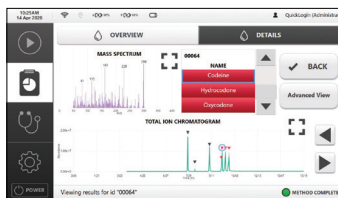
Specifications are subject to change without notice.
For the most up-to-date specs, go to www.teledyneflir.com



Method Selector Tool



GSS Touch Chemical Identification Result



Trace-level detection of narcotics like Fentanyl and its analogues

This product is subject to United States export regulations and may require US authorization prior to export, reexport, or transfer to non-US persons or parties. Diversion contrary to US law is prohibited. For assistance with confirming the Jurisdiction & Classification of Teledyne FLIR, LLC products, please contact exportquestions@flir.com. ©2021 Teledyne FLIR LLC. All rights reserved.

Revised on 11/10/21
Griffin G510_Datasheet-LTR 21-1110