

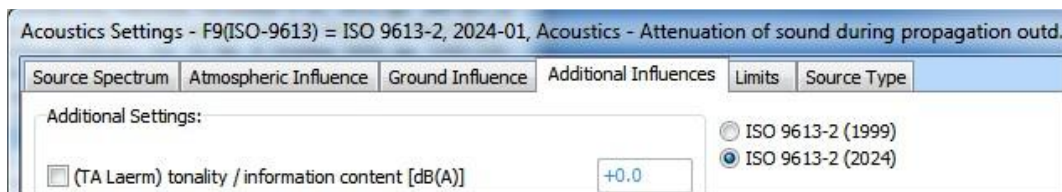
## EFC-400 Release 2026 – new AN ISO 9613-2: Date 2024

Overview of the new features:

- ☐ New is the implementation of Audible Noise ISO 9613-2: Date 2024
- ☐ Multiple registrations of users without conflict of access rights
- ☐ Zoom and move by mouse in 2D/ISO-view as in construction window
- ☐ Change orientation of the building roof by 90 degrees with a click
- ☐ Multiple selecting and editing of objects in the Block Manager
- ☐ 'Connect' command now connects ends of conductors at intersection point ⑨ Insert
- ☐ multiple blocks in just one step

### New Calculation Functions:

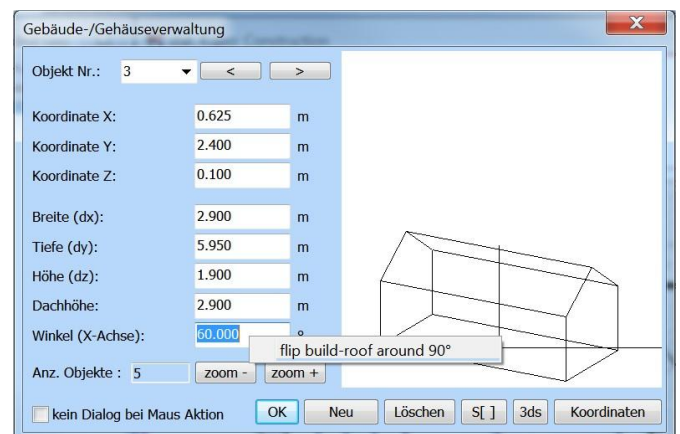
- The Revision ISO 9613-2 date 1999 to 2024 is integrated (see picture below):



- The rope calculation has been converted to the new IEEE Std 738-2023.
- During phase optimization, each individual calculation can now be canceled with ESC.

### Improved User Interface:

- In the Building Manager, right-clicking on the field for entering the X-angle now brings up a local menu command that allows changing the orientation of the roof by 90° without rotating the base-area of the building.



- In the conductor configuration windows there are new hints on some elements, which indicate that new commands can be executed here by clicking with the right mouse button. This also affects the coordinates-list.

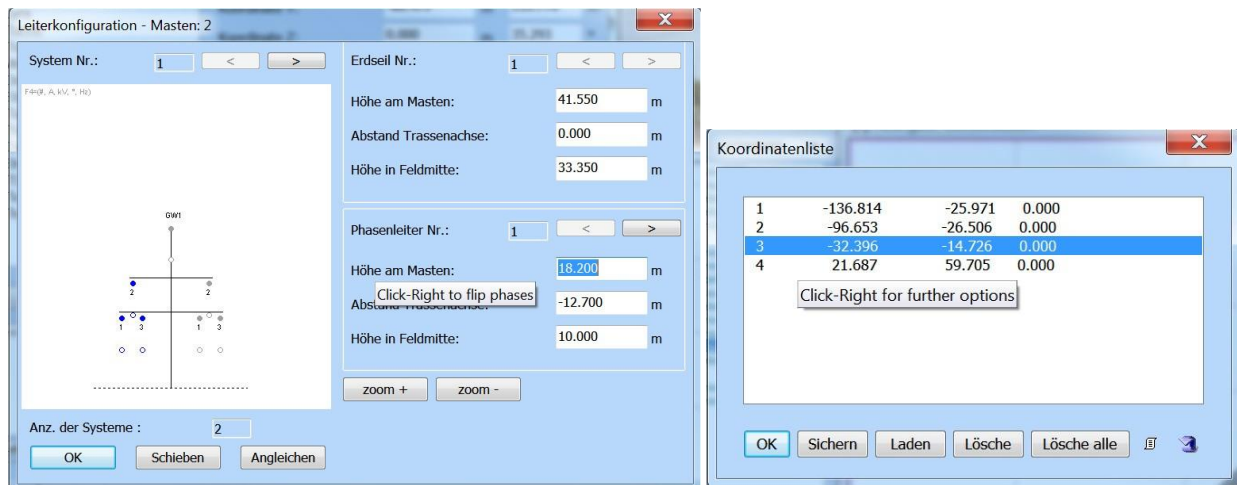


Fig.: new hints in conductor configuration and coordinates-list dialog

- When zooming in the 2D- and ISO-windows, it is now possible to change the view with the arrow keys, the mouse pointer and the mouse wheel, just as it is possible in the construction window. The precondition for this is that the construction window is closed, because otherwise the drawing effort is high, since all windows would update at the same time. Basically, the following movements are possible in the 2D- and ISO-windows when the construction window is closed: 'move by cursor', 'zoom by mouse', 'move by mouse' and 'zoom by mouse-wheel'.

## General Improvements:

- When installing the software also a registration into the 'EFC-400.ini' file will be performed now. On this file, every user has generally full access rights. This is an advantage in case of access right violations during a new registration due to the operating system guidelines.
- For security reasons, the software registration has been changed so that multiple registrations can be made if an error occurs when registering existing users or if additional users are registered.

## New Construction Functions:

- As for towers and buildings, multiple insertions at different positions via the coordinates-list are now also possible for blocks. To do this, simply select several points for the locations and then press the 'Select all' button in the coordinates-list to insert the blocks.
- In several dialogs containing object lists, it was previously only possible to select a single object for editing. Now it is also possible to make a multiple selection in some dialogs. This concerns e.g. the Block Manager and allows the simultaneous assignment of shielding-factors or 3dsobjects to several blocks.

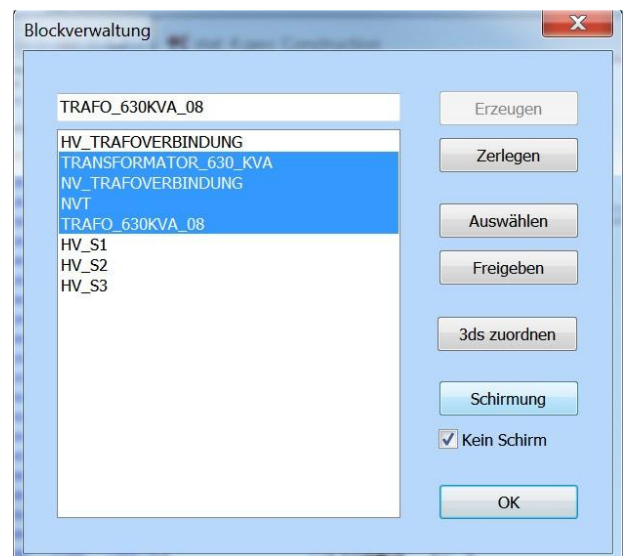


Fig.: multiple selections of blocks for editing in the Block Manager

- The 'connect' command for two conductors has now been improved in the way that the geometric center-point is no longer used for the modified ends of the conductors, but the ends of the conductors are extended and the new common connection point is thus located exactly at the intersection of the straight conductor lines extensions.

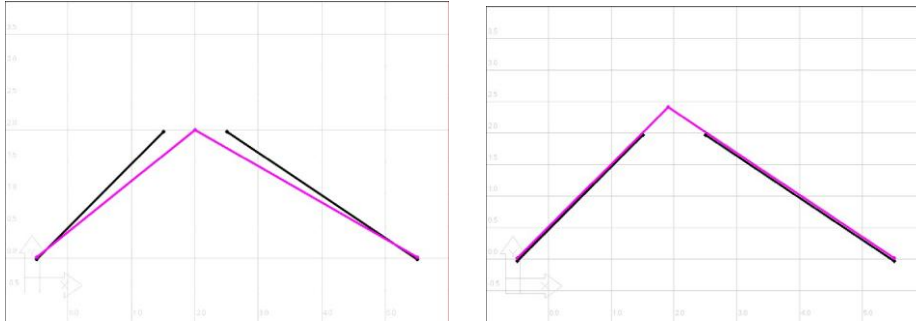
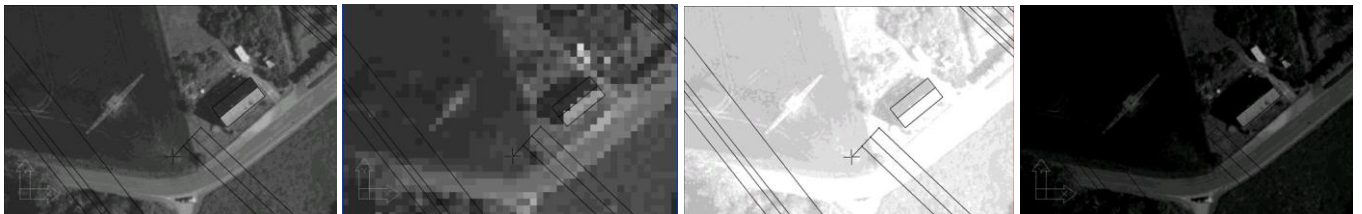


Fig.: new improved version of the 'connect' command (right new, left old)

## Cartographic Data:

- For the export of isolines, it is possible to divide the area of the calculation into sub-areas for large projects and to calculate and export them individually. It was explicitly checked again that the isolines of the individual sub-areas fit together exactly at the borders.
- To speed things up, the background map is roughly rasterized when zooming and paused when the space bar is held down. The brightness can also be adjusted using the +/- keys on the numeric keypad.



**Forschungsgesellschaft für Energie und Umwelttechnologie - FGEU mbH**  
 Yorckstraße 60, D - 10965 Berlin, Telefon 030 / 786 9799, Telefax 030 / 786 6389